

Spotlight

JANUARY 2015

powerhouse theatre

POWERHOUSE THEATRE 2014/15 SEASON

President's Message



Welcome to 2015! I hope that you had the chance to enjoy a wonderful holiday season with those who mean most to you. The turning of a new year gives us the chance to look back over the past year and to also look forward to what's ahead. In 2014, many Powerhouse members experienced some "firsts". We appreciated the bravery of new directors and many first-time performers; some took on new roles on design teams, production teams, in the booth and backstage; as well, we elected several new Board members. We've been supported to try new things by those with the knowledge and experience to help us be successful. And thus, we've learned and grown as a theatre community.

And now we think about the year before us and what our hopes are for our theatre. In beginning to work toward some of them, we've started early work around improving communication, clarifying roles/responsibilities and reviewing our stage lighting. What other hopes do you have for Powerhouse? What ideas do you have for how to achieve them? I encourage you to approach any Board member and share your thoughts. I wish you all the best for the coming year!

Kristine Larsen

Next Executive Meeting: Thursday, January 15th at 6:00 PM

2014/15 Powerhouse Theatrical Society Directors

President	Kristine Larsen
Vice President Productions	Sarah McLean
Vice President Facilities	Willem Roell
Secretary	Cara Nunn
Treasurer	Jennifer Goodsell
Communications & Marketing	Barb Keith
Membership	John Lomas
Director at Large	Sandra Simao
Director at Large	Jessika LaFramboise
Director at Large	Jackson Mace

Powerhouse Executive meetings are held the first Tuesday of the month at 6:00 pm.

All are welcome.
E-mail the Executive at: execuive@powerhousetheatre.net



Zone Rep Sarah McLean



JANUARY 2015

Spotlight

THEATRE BUSINESS



16 people attended... for 2 hours each... equals 32 total man hours

**Dave Brotsky, Sherry Moir, Kristine Larsen, Peter Wiebe,
Regina Picco, Trish Stewart, Doug Fairweather, Bert Devries,
Cathie Stewart Cara/ Sara/ Maia Nunn, Ron Lovie and Nephew Patrick,
David Jones, Willem Roell**

**106 stage lights cleaned... makes an average of 6.5 stage lights each...
taking an average of 18 minutes per light.**

**23 cleaning rags used.... dipping into 8 ice cream buckets....
consuming 56 ml of dish soap...**

**1448 cubic feet (volume) of compressed air blew the dust off the lights and into
the air for us to breathe... the dust removed weighed 960 grams.**

total of 2544 vertical feet of travel of all lights from pipes to floor and back

**7 small parts from the stage lights found on the
floor after sweeping up!!! Not bad!**



JANUARY 2015

Spotlight

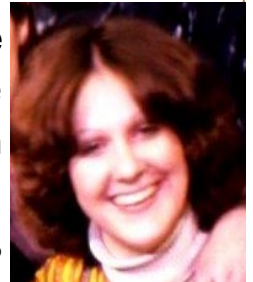
Spotlight on Members

Life Membership



2014

Congratulations to Lorraine Johnson-Brotsky, the latest recipient of the Powerhouse Theatre's Life Membership in recognition of a long history of affiliation and contribution to our theatre.



1979

“Has it really been 36 years? I was overwhelmed, completely surprised and honoured, when Scotty presented me with the Powerhouse Theatre Lifetime membership after the preview show of Snow White”, said Lorraine.

I moved to Vernon in November of 1978 to work for Far West. I met Val Redstone at Harley's fabrics and she brought me to a Powerhouse theatre meeting, introduced me to a few folks, and I signed up to work on costumes for “*I Never Sang for My Father*”, directed by Scotty McLean. By the next meeting I was asked to fill in as the secretary on the executive, and then offered to do Costumes for the next play; “*The Only Game in Town*”, directed by Monty Hughes.

That September I came to a meeting and was encouraged to co-design the set for “*Dracula*” with Dave Brotsky (yes, this is where we met) and also co-produce the show with Nan Harwood.

And that was only my first year in Vernon!

I have enjoyed designing, creating, learning and playing ... and working with lots of wonderful people.

And I will continue to do so for many more years!

Thank you for the recognition.

Lorraine Johnson Brotsky

NOTE: If you have something to put in the Spotlight Newsletter, please send it to heuman@shaw.ca

JANUARY 2015

Spotlight

Salt Water Moon: February 25 to March 7

DIRECTED BY: Arlene Spearman

Produced by: Sherry Moir and Helene Clark

It's a splendid moon-filled night in Coley's Point in 1924. Eighteen-year-old Jacob Mercer has returned from Toronto to the tiny Newfoundland out port, hoping to win back his former sweetheart, Mary Snow. But Mary has become engaged to wealthy Jerome McKenzie, and she is still hurt and bewildered by Jacob's abrupt departure a year earlier. She will not be easily wooed...



Page 4

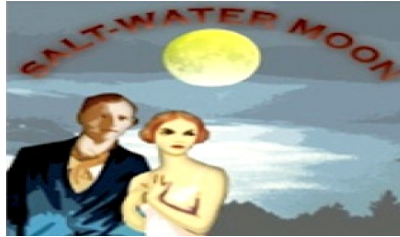
JANUARY 2015

Spotlight

Salt Water Moon: February 25 to March 7



Andrea Pitman
as
Mary Snow



Gavin Opp
as
Jacob Mercer



Technical Crew

TECHNICAL PRODUCER:.....
 STAGE MANAGER:
 SET DESIGN:
 SET DESIGN MENTOR
 SET CONSTRUCTION:.....

 SET DÉCOR:

 LIGHTING DESIGN:
 LIGHTING OPERATOR:
 SOUND DESIGN:
 SOUND OPERATOR:
 COSTUMES:
 PROPS:
 HAIR & MAKE-UP:

Sherry Moir
 Kristine Larsen
 Gord Bannerman
 Eugene Leveque
 Gord Bannerman
 Bob Spearman
 Peter Wiebe
 Sheryl Bossons
 Dave Brotsky
 Ron Lavoie
 Kelly Ingersoll
 Marnie Cullum
 Bob Oldfield
 Joanne Taylor
 Rhonda Nicholas
 Maureen Ruacheinsky
 Suzanne Roberts

Administrative Team

ADMINISTRATIVE PRODUCER:
 PREVIEW :
 GREENROOM BAR
 FOYER

 FOYER BAR:
 FRONT OF HOUSE
 MARKETING/ BUS. MGR:
 PHOTOGRAPHER:
 OPENING NIGHT Lorraine Alum &
 FINAL NIGHT: Debra Bob &
 POSTER & PROGRAM

Helene Clark
 Val Heuman
 Ann Cordingley
 Wendy Stevens
 Carol Jenkins
 Ron Heuman
 Ann Cordingley
 Barb Keith
 Kora Vanderlip
 Ruth Astin
 Rigina Picco
 Carol Marks